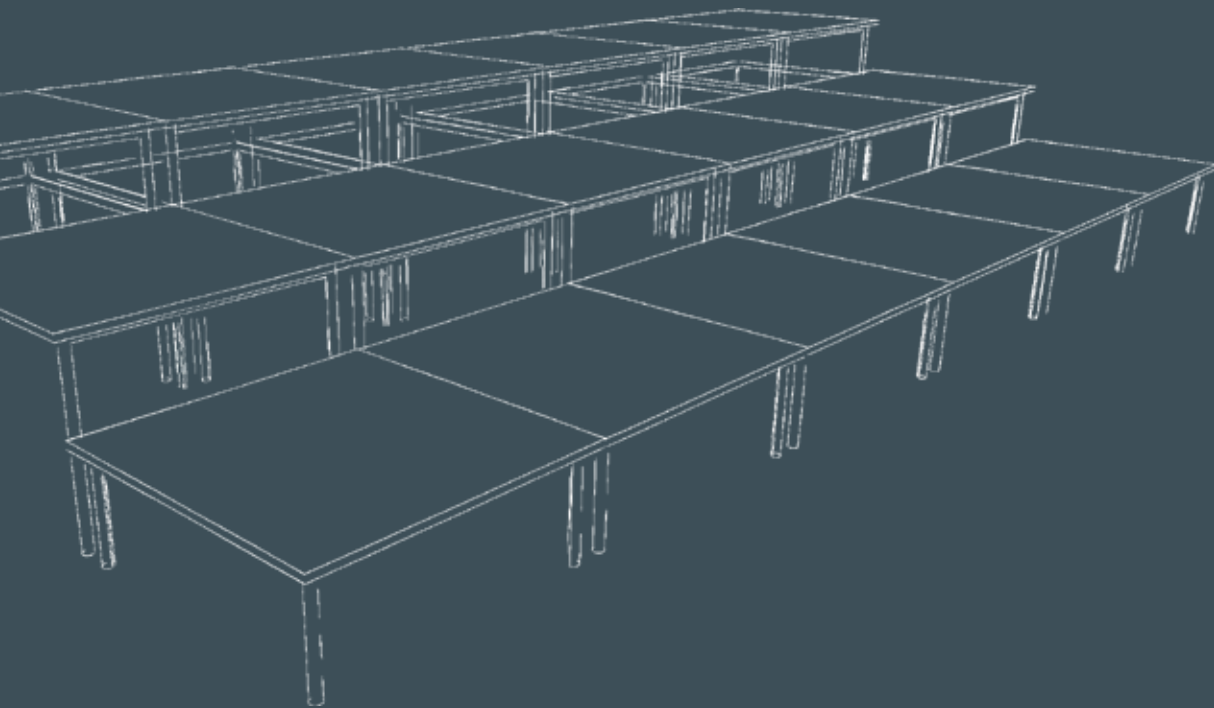


# furniture catalogue

EDUCATION : AUDITORIUM : STAGING : OFFICE

EDITION FOUR 2016/17



linc  
FURNITURE

## About Us

Linc has been supplying creative, ergonomic furniture solutions to schools, colleges and Universities in Australia for over seven years. Linc prides itself in its continued commitment to providing better product, at affordable prices. Linc aims to provide commercial furniture that not only stands up to the rigors of day to day life, but works to enhance the environment where it is used. Linc is constantly evolving its range of contemporary products, providing unrivaled service & innovative solutions for most of your furniture and staging requirements, our latest products further enhance our offer and include a range of new office furniture.

## Quality

Linc quality starts with its proven designs and trusted manufacturing processes. Most Linc products are certified to internationally recognised and current standards, addressing strength,

stability and size. Just like EN1729, most up to date Educational Furniture Standard, introduced in December 2006 to ensure school furniture is the right shape to support a child's posture and that the products certified are strong enough to stand up to daily classroom use. Linc quality extends beyond the product and includes our unrivaled commitment to providing quality service, and helpful support to the customer and end user alike. Linc, a name that you can trust, quality you can be assured of.

**5** year  
WARRANTY

## Warranty

Linc products are built to last, and designed to survive in a high use commercial educational environment. To support this, Linc stands behind its products with a no nonsense warranty. A warranty that meets, and in most cases exceeds industry standard. A simple peace of mind warranty, supported by manufacturer and suppliers alike.

## New In This Issue

New Office Furniture & Desk's



New Office Chairs



New Nautilus XL Linking Chairs



## Contents

<b>Office</b>	<b>Page</b>
Workstations	4-5
Signature	
Storage/Cabinets	6-7
Signature	
Office Chairs	8-11
Oasis	
CC	
Bree	
Axiom	
Star Exec	
<b>Chairs General</b>	<b>12-15</b>
Maui	
Zulu	
MX2	
Chase	
Venus	
Brunswick	
<b>Tables General</b>	<b>16-17</b>
Signature Tables	
EU Tables	
Cruciform & Disc Tables	
<b>Education</b>	
Tables & Desks	18-19
Max Folding Tables	
TO8 Desks	
GP Tables	
Eclipse Tables	
Seating	20-21
Nautilus	
ST Chairs	
Saddle Seats	
Gemini Stools	
<b>Fixed Seating</b>	<b>22-23</b>
Camatic	
<b>Staging</b>	<b>24-25</b>
Q Build	
<b>Accessories</b>	<b>26-28</b>
Lounges/Ottomans	
Trolleys	
Bag & Hat Hooks	

# bag & hat hooks

for more  
information  
on bag & hat  
hooks see  
page 28

# Signature Workstations & Desks

versatile work surfaces & storage



## Signature Workstations & Desks

The Signature range of products offer versatile, flexible work space solutions for any office.

Available in a range of configurations and sizes, Signature workstations and desks are complimented by a range of matching tables, storage caddies and cabinets.

55mm x 55mm Triangular Tough powder coated extruded tubular steel frame.

Screens options include 12mm thick MFC screen, or soft touch fabric screen with aluminum extruded frame and tool rail. Optional Acrylic screen available in a range of colours.

Work station clusters are available as 1500mm x 800mm and or 1800mm x 800mm. work surfaces Two, Four and Six workplace clusters (back to back)

Mobile pedestal options include 1 x box, 1 x file and or 2 x box 1 x file. Lockable with 5th wheel fully extend-able draw runners.

3 year  
WARRANTY

2015/16 © Linc Furniture 2015



# Signature Storage

Signature storage units include credenza's, upright cupboards, book shelves, and mobile under desk units. Clever combinations of the above form a comprehensive range of storage options. Hard wearing easy to clean laminate construction, optional glass doors. Available in a range of colours.

## Products Include

Credenza's



Cupboards



Bookshelves



**3** year  
WARRANTY

# Oasis executive chairs



## CC Chairs

CC Chairs are available with two backrest heights, optional adjustable armrests and drafting height gas-lift mechanisms.

Heavy duty 3 lever ergonomic mechanism, adjustable backrest and high density foam add to the comfort of this chair.

CC colours include:

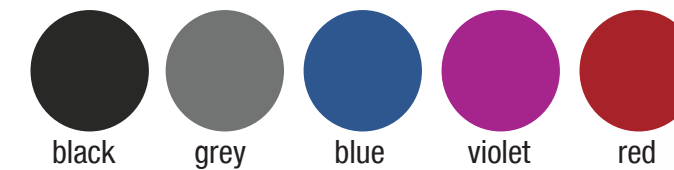


## Bree Chairs

The BREE chair is an affordable mesh back administration chair. Comfortable upholstered seats are available in a range of colours, strong and durable mesh backrest provides for added comfort and air circulation.

BREE chair's are available with and or with out armrests, and with a drafting height base that includes an adjustable footrest. Tension adjustable tilt mechanism as standard.

Bree seat colours include:



3  
year  
WARRANTY

Optional drafting base





# Axiom Chairs

AXIOM Chairs are fitted with a synchronized tilt mechanism. Height adjustable backrest and adjustable seat's combine with Axiom's contoured seat cushions to add comfort to this chair.

Optional adjustable armrests and five star bases provide for the most discerning specifier and or end-user. AXIOM Chairs have a unique modern and up market appearance that will enhance any office interior.

Linc's Wave mesh back option is available for this Product as is a extra heavy duty reinforced version.

Options Include:



Moulded 5 star base



Polished spider base



Wave mesh backrest



A5 adjustable armrest



High back



Medium back



Drafting

2015/16 © Linc Furniture 2015



High back pictured

## Star Exec Chairs

STAR is your choice for those who treasure a traditionally styled management chair. With soft extra thick cushioning, STAR continues the tradition.

Separate seat and back units are joined by heavy-duty brackets, that make this range suited for heavy use.

Locking tilt seat mechanisms are standard; three backrest heights include a Standard Back, Medium back and a High Back backrest option is available with this chair.

STAR Exec Chairs are at the forefront of seating comfort, whilst maintaining traditional values and styling.

## Office & Meeting Chairs

Linc's Axiom and Star chair's are manufactured in Australia and are available in a a range of standard upholstery fabrics, or nominate an alternative upholstery of your choice.

Axiom chairs have been designed for the corporate executive who is looking for something more than just a chair, these chairs combine the functionality of a task chair with all the style and aesthetics of an executive chair. Heavy duty versions of this chair are available for those area's that are hard on furniture, yet demanding on style and functionality.

For those on a budget consider Linc's Bree and or CC Chairs. Tried and proven commercial furniture that will brighten up any office.

Chairs for all budgets Linc's Flagship Oasis chairs offer the functionality of chairs twice there price. Oasis chairs offer a range of options that will compliment the office or the board room.

Ask how Bree and Oasis chairs can be supplied flat pack for ease of transport.

3 year  
WARRANTY



## Maui Chair

Italian designed MAUI ticks all the boxes when looking for a light weight, functional stacking chair that is as comfortable as it is good looking. Designed with comfort in mind a 20° backrest tilt action, provides the extra comfort that other chairs may forget about. Arm or no arm versions available. Stacks eleven high and weighs 5.3kg. Upholstery options available.



## MX2 Chair

The MX2 range of chairs offers comfort and functionality on a grand scale. A comfortable upholstered seat is available in a range of colours that compliment the chairs hard wearing breathable action tilt back, seats tip to allow the MX2 Chair to nest or stack.

MX2 Chairs are available with a range of castor options, four castors, two front castors with floor tips at the rear, or no castors at all. Optional armrests are available.



Linking  
option



## Zulu Chair

Stackable up to 20 high the ZULU Chair is a compact stacking chair that solves so many problems when storage space is at a premium,. A range of stack and store trolleys compliment this product that is available with a moulded seat and backrest. Heavy duty chrome compact sled base stacking frames are easy on carpet and strong. An optional linking device is fitted to the base when required.

2015/16 © Linc Furniture 2015

# General Purpose & Training Chairs

Linc is proud to offer it's range of General Purpose and Training Chairs, designed to compliment most decors and meet most budget's.

Chairs with style and comfort that will compliment most commercial environments with out skipping on quality.

Our new range of chairs includes a mix of home grown Australian manufactured products and lower cost options that are available for your selection.

Compact stacking chairs like the Zulu chair offer a great option when storage space is at a premium. Trolley and storage systems are available, for these products.

Backed by Linc's 3 year warranty our chairs offer peace of mind when fixing furniture is the last thing that you need to be concerned about.

Ask Linc about road testing a sample, we're sure you'll like what you see.



# Chase Chair

CHASE Chairs are available with and or with out Upholstery, and with an optional stacking armrest. The basic poly propylene are both hard wearing and robust without compromising comfort. Vented free flow backrests provide for air circulation. A winner in any environment.

3 year  
WARRANTY



STACKING



Back Size: 300 H x 440 W  
Seat Size: 430 W x 430 D  
Seat Height: 460mm  
Overall Height: 820mm

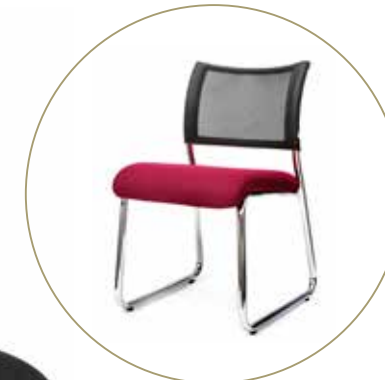
2015/16 © Linc Furniture 2015



## Aquarius Chair

Stylish, Functional and Comfortable a chair to suit all budgets and requirements from clubs to corporate. Choices include 4 leg, swivel base and gas lift.

Seat Height:: 435mm (4 leg & fixed star base)  
Seat Height:: 455 - 520mm (gas lift)  
Seat Depth: 455mm  
Overall Width: 610mm  
Overall Height: 795mm



SLED BASE



ARM CHAIR

## Brunswick Chair

The BRUNSWICK chair is an affordable mesh back multi purpose chair. Comfortable upholstered seats are available in a range of colours, strong and durable mesh backrest provides for added comfort and air circulation. The BRUNSWICK chair is available with or with out armrests, a sled base version rounds off the range. Chrome and or powder coated frames available.



## Signature Tables



SIGNATURE Tables are made from the same tough 55mm x 55mm triangular extruded steel frames as our Signature Workstations, 25mm thick tops are finished with a 2mm ABS edge strip and are available in a range of colours.

Standard Sizes Include:

1000mm x 1000mm, 2400mm x 1100mm, 4000mm x 1400mm.  
1800mm x 900mm, 3200mm x 1200mm,

## Cruciform Tables

Powder coated tubular steel cruciform base. Adjustable leveling glides and feet shrouds enhance this product in any office environment. 25mm thick 1000mm diam tops with matching ABS edge strip.



## Disc Tables

Hard wearing chrome wine glass base, supports a 1000mm diameter top and is available in a range of colours. Traditional design, perfect as an office meeting table, or break out table.



## EU Tables

EU Tables reflect European styling and practicality, with inboard legs to maximise seating positions and a range of top shapes and sizes.

Fully supported tapered, shaped tubular steel frames are powder coated for added durability and ease of cleaning. 25mm thick laminated tops are supplied with a matching 2mm ABS edge strip and are supported by a rigid steel under-frame system.

Boat shaped and rectangular tops available in a range of sizes.



# Tables & Desks



## Max Tables

An agile organisational tool that quickly transforms an office or learning space into a variety of functional purposes.

With stylish commercial locking castors, MAX can be moved easily to form different configurations and shapes.

An adaptable work surface that offers greater flexibility in an office or learning space.

MAX's unobtrusive integrated gas assist folding mechanism and nesting characteristics, saves on storage space, and was designed to not obstruct leg space.

MAX's hard wearing powder coated Aluminum frames are light, strong include lockable castors that make them easy to maneuver. Frames include an integrated



cable tidy in the side frame.

25mm thick tops are available in a variety of work surface sizes that include:

1800mm x 900mm, &  
1500mm x 750mm

Ask about MAX's optional inter-locking top connector cams and corner infill's.

**3** year  
WARRANTY

## Eclipse Tables

100% Australian made, and are available in a range of fixed frame heights or height adjustable frames, with or without castors. Hard wearing, easy to clean laminate tops. 900mm diameter tops are available in 5 x heights from 520mm, 580mm, 640mm, 700mm & 760mm.

Three shapes available



Fixed or adjustable  
height frames



STORAGE TRAY

## GP Desks

Available with either fixed height or optional height adjustable frames. Easy to clean laminated tops, incorporate a moulded tough edge strip or routed self edge. Available in 5 x heights from 520mm, 580mm, 640mm, 700mm & 760mm.



## TO8 Desks

Hard wearing fully welded steel frames are available in a range of fixed heights. Easy to clean laminated tops incorporate either a moulded tough edge strip or a routed self edge. Available in 5 x heights 520mm, 580mm, 640mm, 700mm & 760mm.

2015/16 © Linc Furniture 2015



# Nautilus Chair

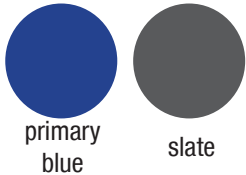
Affordable comfort, easy to clean, strong and hard wearing.

NAUTLIUS chairs are a one piece moulded polypropylene stacking chair. European designed and manufactured from the highest grade raw materials. NAUTILUS chairs have been tested and conform to International strength and stability standards. Available with a generous seat size and in three heights. NAUTILUS chairs are suitable for use by primary and secondary students alike.

- Generous seat size
- Stackable
- Chair trolley available
- Trusted European design and manufacture
- BS4875 and EN1729 accredited for strength and stability
- New size 6 XL chair includes an integral linking device, safe and sound.



Nautilus chairs are available in



EN1729  
COMPLIANT



# Gemini Stools

GEMINI Stools are made in Australia, made for Australian coinditions. Tough powder coated steel stacking frames and poly proplyene seat and backrests. Work chairs (with back) or stools (no back) are availabe in three heights 680mm, 610mm & 560mm.

# Education

## CHAIR/DESK, SIZE RECOMENDATION CHART

AGE GROUP	CHAIR HEIGHT	TABLE HEIGHT
Size 1 - Kindergarten	260mm	460mm
Size 3 - Grade 1-4	360mm	580mm
Size 4 - Grade 4-6	400mm	640mm-680mm
Size 5 - Secondary	430mm	710mm
Size 6 - Secondary	460mm	710mm-760mm

Please consider

- Under desk storage and or storage trays will impact the relationship of the chair and the desk top height. Most storage trays occupy approximately 125mm of leg room space, this needs to be taken into consideration to ensure siting comfort is not compromised..



# Saddle Chairs

SADDLE chairs are available with easy to use hard wearing, gaslift swivel base options that include three different height ranges. Manufactured from Glass Filled Nylon, a one size fits all textured seat moulding is easy to clean. Ask about our new UPHOLSTERED SEAT options.



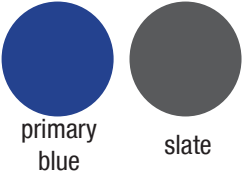
# ST05 Chair

An affordable ergonomic alternative to a one piece moulded plastic chair.

ST Chairs were designed to provide strong posture, a contoured flexible backrest supports your back in all the right places, and was designed specifically for use in a classroom environment. ST Chairs are made from tough, easy to clean polypropylene, ST Chairs include four sturdy powder coated steel stacking legs that are individually press fitted into the seat shell, no welds to break, or screws to come loose. Optional moulded linking modules and upholstered seats are available.

Chairs available with a 430mm high seat.

ST chairs are available in



EN1729  
COMPLIANT





# Fixed Seating

CAMATIC  
SEATING



## Quantum

Versatile and flexible QUANTUM'S rail mounting system and intelligent construction ensure this seats position in the most demanding venues. Rail mounted, pedestal or cantilever options include Writing Tablets, Armrests and Upholstered seats and backrests.



FREE STANDING



WRITING TABLETS



## Clarity

CLARITY offers a range of finishes including full upholstery in plush fabrics that bring a richness and warmth to any venue. Seat outer backs in natural timber or easy care polypropylene and a range of arm finishes and accessories are also available.

The unique CLARITY mounting system enables installations at varying seat centres with alternate back inclinations at the tightest radius rows. The seat also adds to a venue's acoustic ability in all of its standard configurations.



2015/16 © Linc Furniture 2015





Auditoriums and Halls



Enhance the Experience



Flexible Configurations



Tiered Seating Solutions

Strong & Stable

Reversible tops



# Q Build Staging

put on a show that won't break your back!



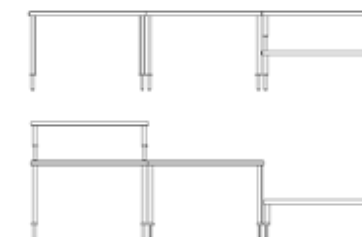
Reconfigure to different shapes and sizes again and again

Q Build is Linc's most popular, proven, light weight stage platform. Easy to assemble, are simply arranged to form any number of different platform configurations. Reversible, hard wearing, hardwood timber decks are stained black on one side, and natural on the other for added flexibility. Fully welded steel frames manage the load, and come with a five year guarantee. Available in individual components or a range of value kits, Linc can tailor a Stage Kit to suit your needs.



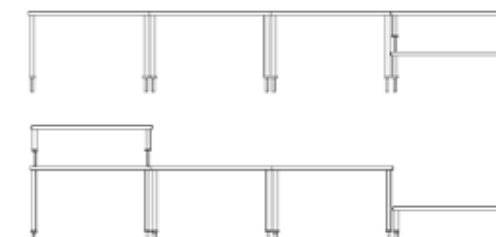
## KIT 1

- 12 x 500mm units (frames and deck)
  - 6 x 277.5mm units (frames and deck)
  - 6 x 277.5mm frames
  - 1 x Trolley
  - 2 x twin tread steps
  - Tie-plates and bungs
  - 9 x meters magnetic stage skirting (500mm drop, variable lengths)
- Creates a 4.5m x 2.25m flat stage at 500mm high or tiered layout as shown.  
Assembly time - 15 mins.



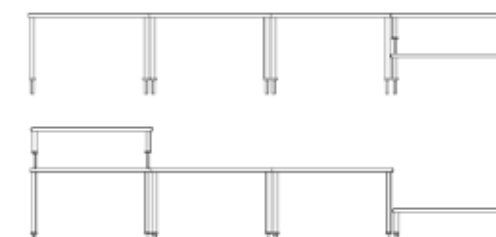
## KIT 2

- 18 x 500mm units (frames and deck)
  - 6 x 277.5mm units (frames and deck)
  - 6 x 277.5mm frames
  - 2 x Trolleys
  - 2 x twin tread steps
  - Tie-plates and bungs
  - 10.5 x meters magnetic stage skirting (500mm drop, variable lengths)
- Creates a 4.5m x 3.0m flat stage at 500mm high or tiered layout as shown.  
Assembly time - 20 mins.



## KIT 3

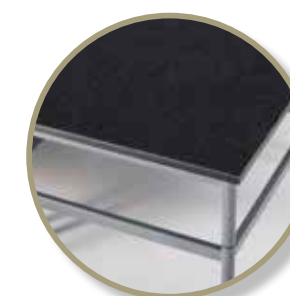
- 24 x 500mm units (frames and deck)
  - 8 x 277.5mm units (frames and deck)
  - 8 x 277.5mm frames
  - 2 x Trolleys
  - 2 x twin tread steps
  - Tie-plates and bungs
  - 12 x meters magnetic stage skirting (500mm drop, variable lengths)
- Creates a 6.0m x 3.0m flat stage at 500mm high or tiered layout as shown.  
Assembly time - 25 mins.



Easy to store & transport



Handrail Solutions



Carpet Options



Skirting Options



# Soft Furniture

3 year  
WARRANTY



## Pluto Lounges

Classic style, comfortable and practical PLUTO lounges available in a number of configurations including single, two seat and three seat units, a double ottoman rounds the range off.



## Saturn Lounges

A modular lounge system that includes single, double and three seat units, with and or with out arms. Choice of armrest widths and backrest heights are available. Made in Australia to order in a fabric of your choice.

3 year  
WARRANTY

# Ottomans



## Ottoman's

Linc offers a range of Ottomans in different sizes and shapes. Round, Square, Clover leaf, Rectangular. Mounted on hard wearing glides or castors these products are 100% Australian made, robust and backed by Linc's two year warranty. Ask about our made to measure Ottomans.

Ask about  
our custom  
shapes &  
sizes



# Trolleys 'n' carts

Trolleys are made with a fully welded tubular steel frame. Heavy-duty commercial wheels and castors ensure longevity and safety. Chair stack trolleys easily handled by one operator fit most stack chairs and are easy on floors. Busy B trolleys have flexible storage options, wide rear wheels cope glide easily over uneven floors and make mail deliveries a breeze. Australian made and warranted.

3 year  
WARRANTY







Large hook for large bags and hats.

Easy to install, screws to wall.

Small hook for library bags and light items.

# Bag & Hat Hooks

## Safety first, tough and strong



As simple as they may be Linc Classroom Hooks provide a better, safer alternative to traditional and potentially dangerous metal bag hooks. Moulded from UV stabilised polypropylene Linc Classroom hooks are suitable for installation indoors and out, no need to paint and no chance of rust. Strong, easy to clean, safe, Linc Classroom Hooks are available in a range of colours and are easy to install.



UV PROTECTION  
WON'T RUST



SUPPORTS UP TO  
25KG



For more information please contact Linc Direct or Linc's approved Distributor or Representative

**linc**  
FURNITURE

P 07 3366 1858 F 07 3366 0268

E [sales@lincfurniture.com.au](mailto:sales@lincfurniture.com.au) [www.lincfurniture.com.au](http://www.lincfurniture.com.au)